



Premier's Synthesis

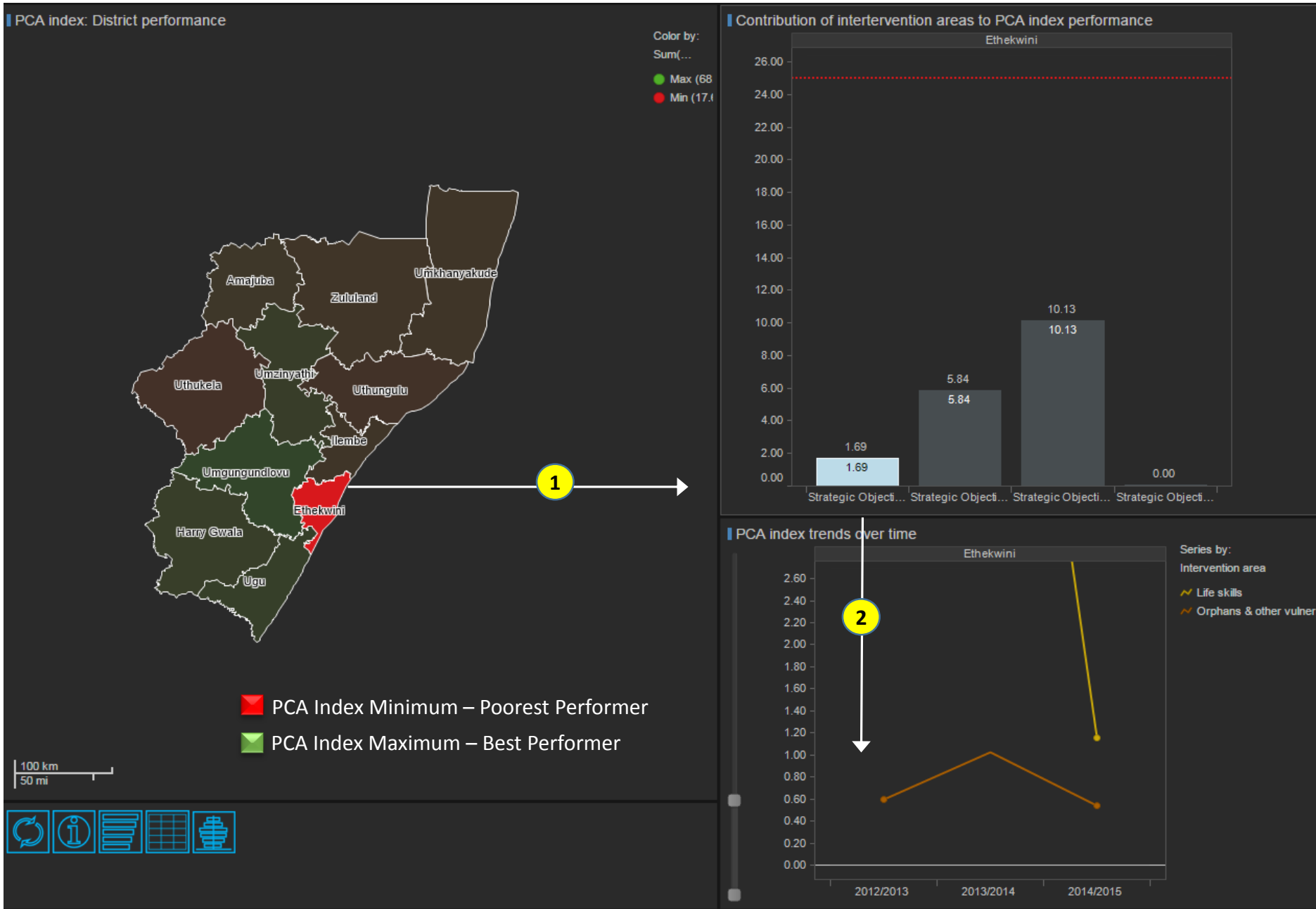
District AIDS Councils Response to the HIV& AIDS,STIs &
TB Multi-Sectoral Response

FY 2014/2015

Dr NI NDLOVU
Chief Directorate of Priority Programmes
Office of the Premier, KZN
August 2015



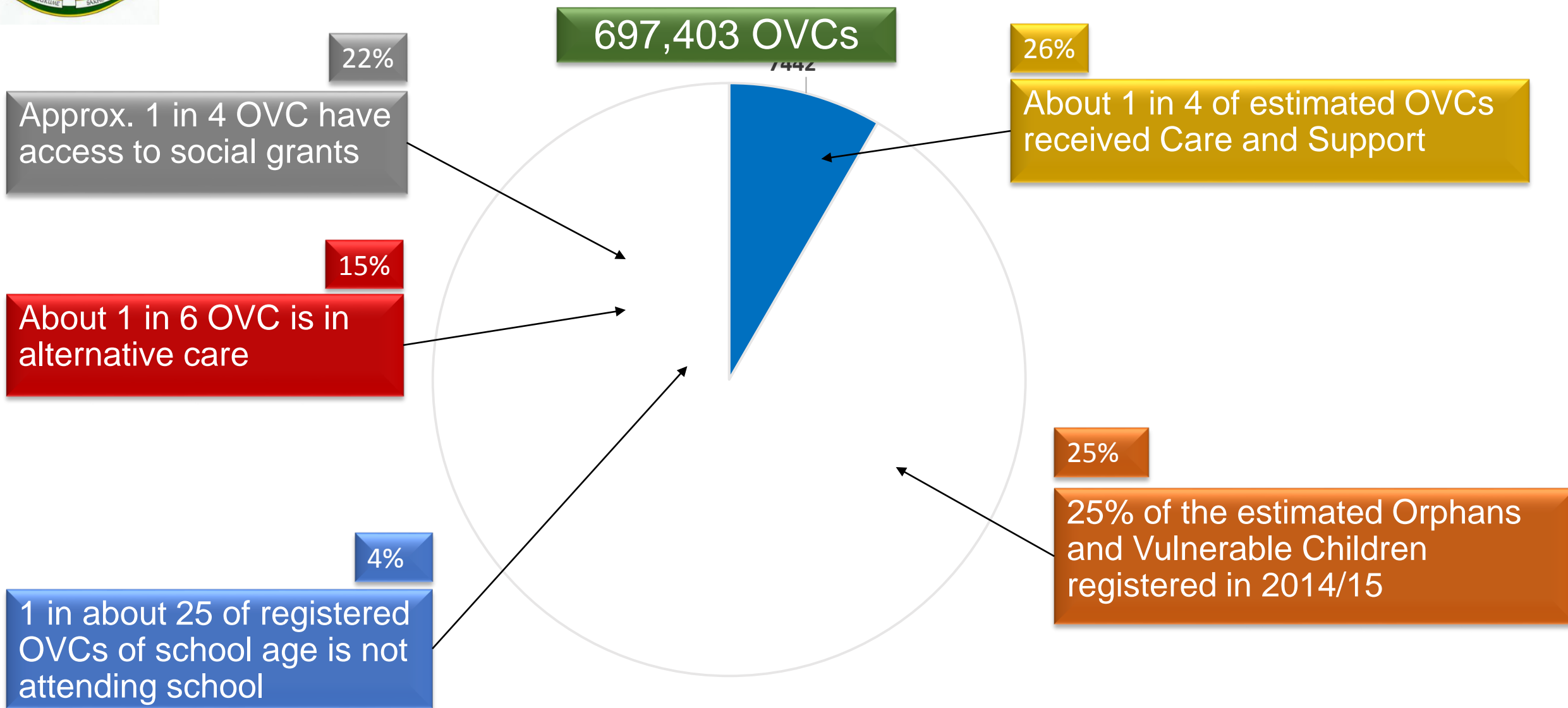
A Guide to Performance – the PCA Index



- The 24 reporting indicators were used to develop a PCA Index (SAMPI and IIAG related methodology)
- The index shows the best performing district in green and worse performing district in red
- Ethekwini's contribution to the overall performance of KZN was the least (ignoring Strategic Objective 4 that had no score)
- Performance of interventions within Strategic objective 1 contributed the most to this level of performance
- Life Skills showed a negative trend over time
- OVCs showed a negative trend over time
- Workplace Programmes did not contribute at all
- All 3 intervention areas had very low PCA scores and can further be investigated individually



ORPHANS AND VULNERABLE CHILDREN





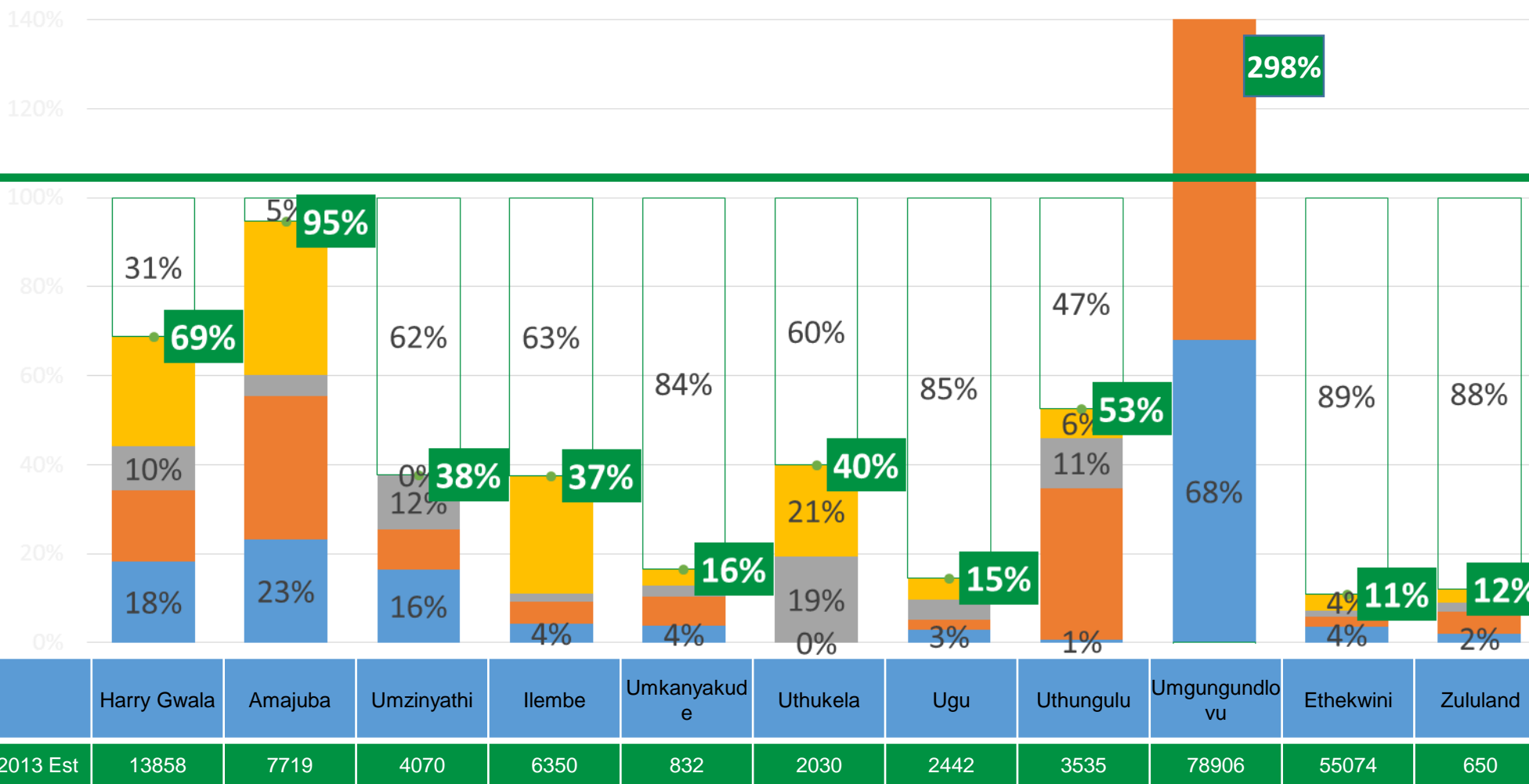
REGISTRATION OF OVCS TO DATE

Large proportion of OVC still to be registered

The districts with the largest burden and smallest registration coverage is eThekwinini and Zululand

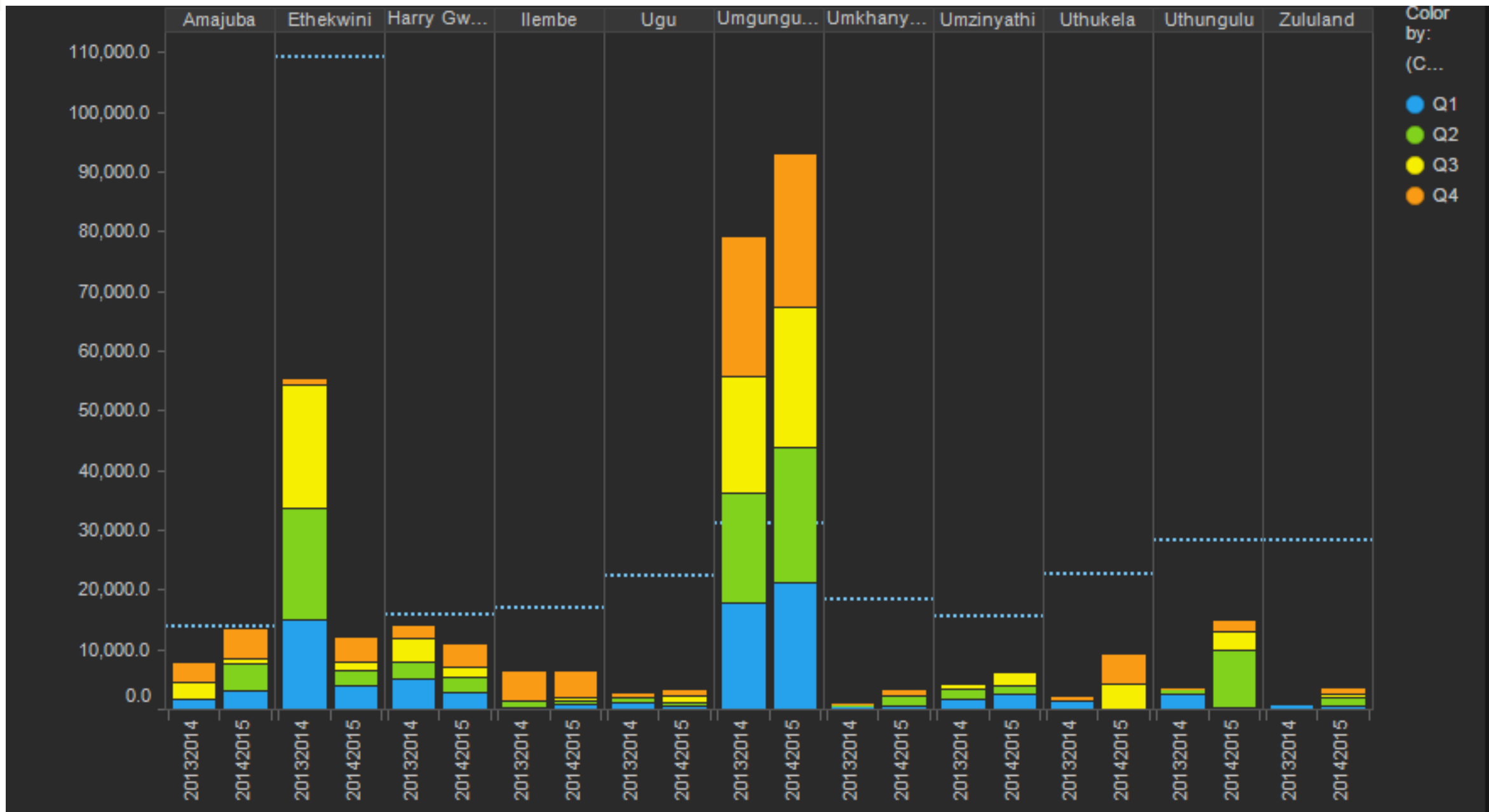
Best inroads made by Harry Gwala, uMgungundlovu and Amajuba

■ Q1 14/15 ■ Q2 14/15 ■ Q3 14/15 ■ Q4 14/15 □ To be registered ■ X% Total registered



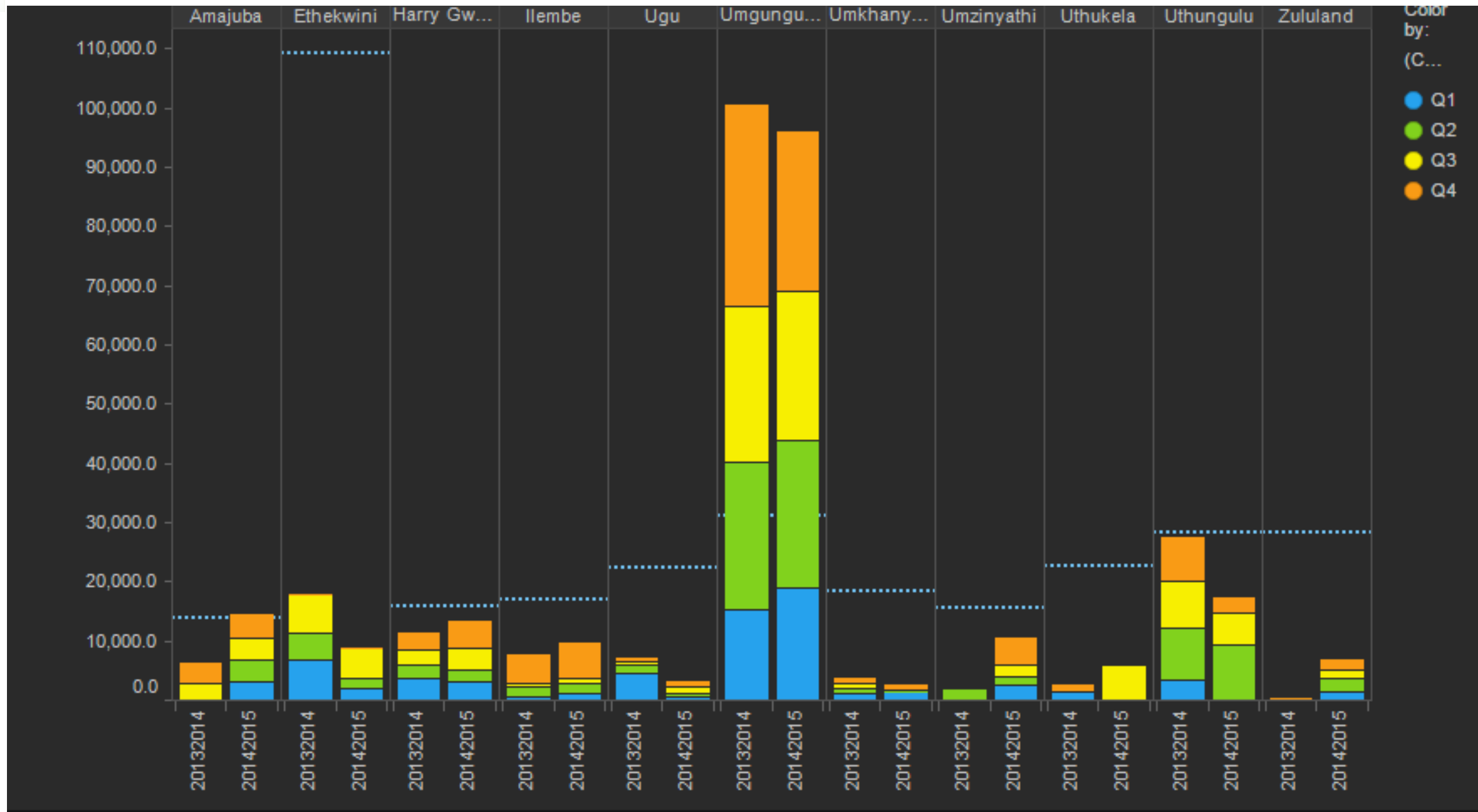


REGISTRATION OF OVCs





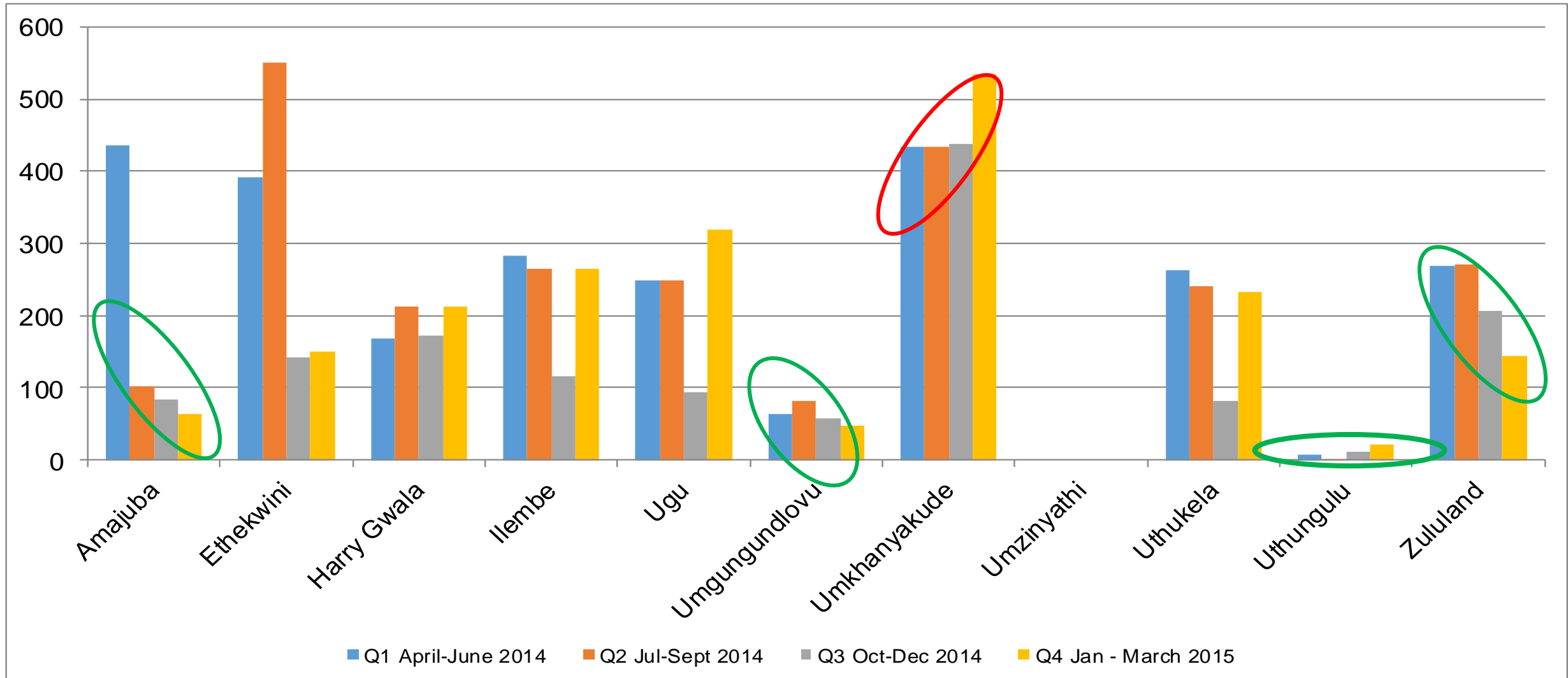
OVCs RECEIVING CARE & SUPPORT



Analysis: Registration of Orphans & Vulnerable Children

- By quarter 4 2014/2015, 43% of the estimated number of orphans & vulnerable children in the province had been registered as compared to 41% in quarter 3 2014/2015.
- 7 districts: Amajuba, eThekweni, Harry Gwala, iLembe, Ugu, uMkhanyakude and uThukela recorded increases in the number of OVC registered between Q3 and Q4 2014/2015.
- uThungulu joined Amajuba, Harry Gwala and uMgungundlovu districts with the highest percentage of OVC registered so far.
- Registration percentage across other districts still low.
- Zululand and uMkhanyakude remained with the lowest registration percentages.
- The total number of registered OVC between 2012 and 2015 is 306645

Learner Pregnancies per quarter 2014/2015(district)



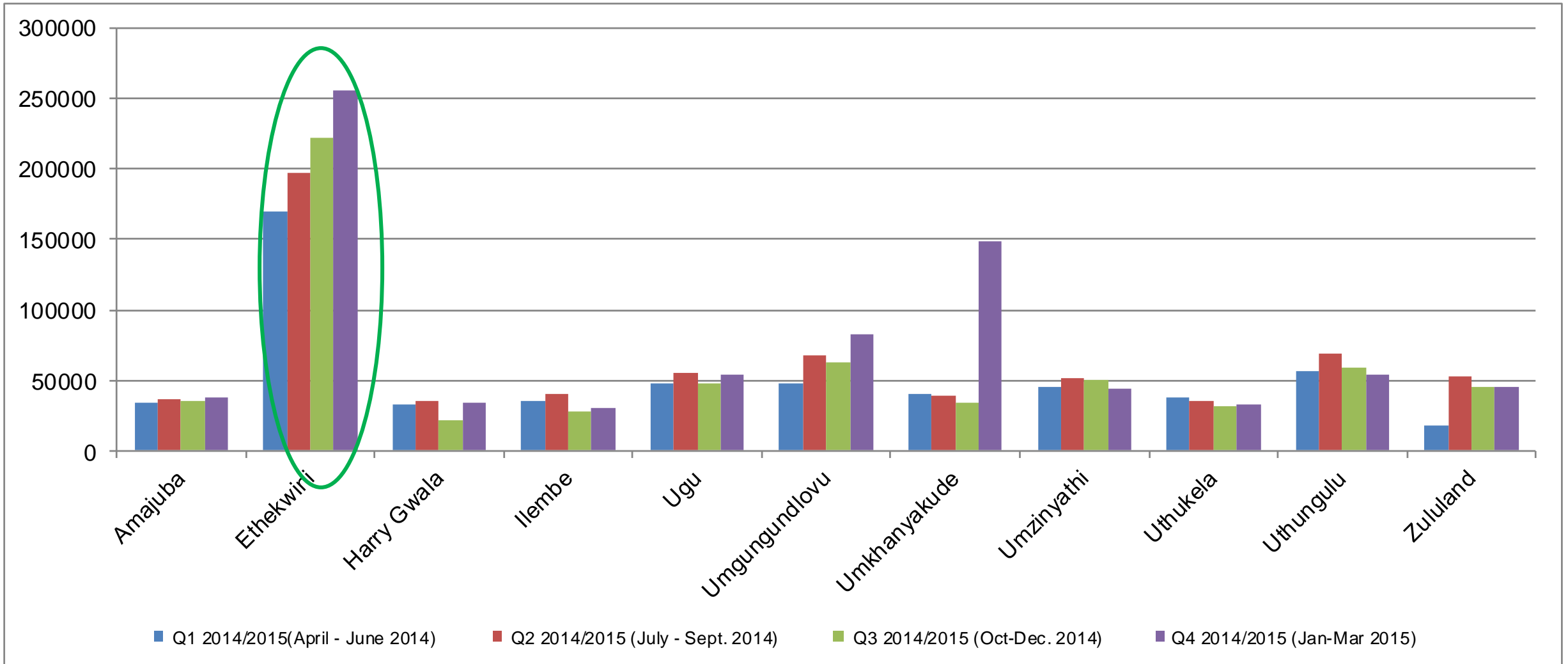
Analysis: Learner Pregnancies

- 7 districts: eThekweni, Harry Gwala, iLembe, Ugu, uMkhanyakude, uThukela and uThungulu with increases in learner pregnancy numbers between Q3 & Q4 2014/2015
- Amajuba and Zululand showing decrease

Analysis: Deliveries Under 18 Years

- Quarter 4 2014/2015 had 4053 deliveries as compared to 3893 in Quarter 3.
- 4 districts: Amajuba, uMgungundlovu, uMkhanyakude and uThukela showed decreases in deliveries under 18 between Q3 and Q4 2014/2015.
- There was a total of 15235 deliveries under 18 in the province 2014/2015.
- Generally decreasing trend in deliveries under 18

HIV tests 2014/2014 per quarter (district)

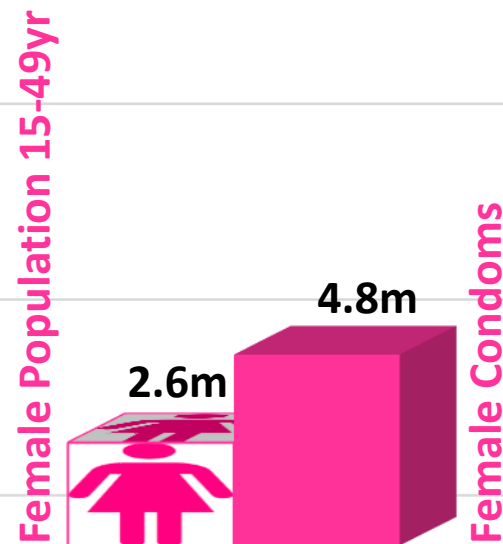
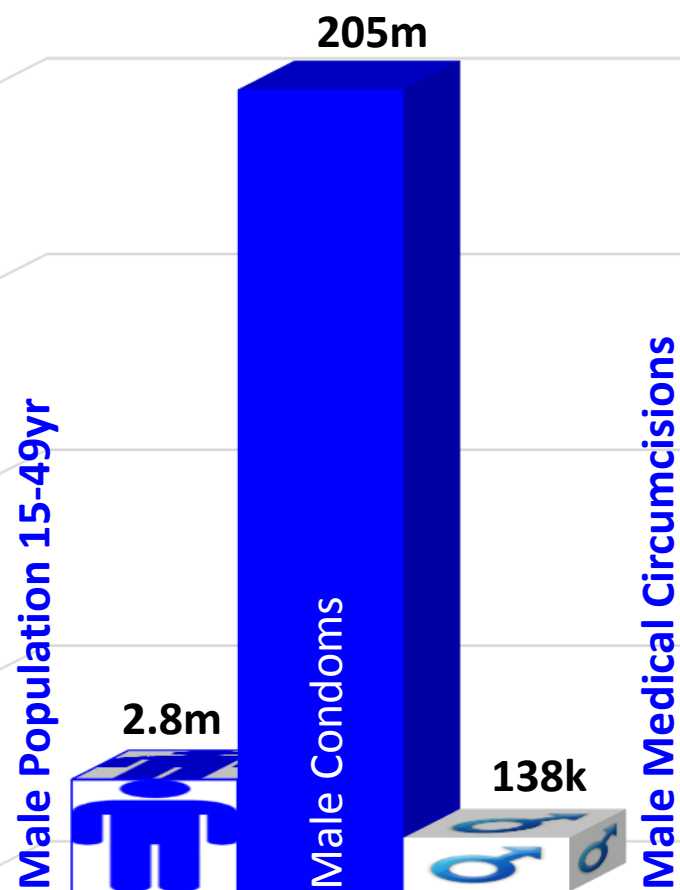


Dashboard 8: HIV tests conducted 2014/2015 per quarter (district)

| | Q1 (Apr-June 2014) | Q2 (July – Sept.2014) | Q3 (Oct- Dec 2014) | Q4 (Jan - March 2015) | Total tested 2014/ 2015 | HIV testing Target 2014/15 | Achieved Target |
|---------------|--------------------------|--------------------------|-----------------------|-----------------------------|----------------------------|----------------------------------|--------------------|
| Amajuba | 33598 | 36404 | 35761 | 37559 | 143322 | 125141 | |
| EThekweni | 169956 | 197018 | 221965 | 255792 | 844731 | 890662 | |
| Harry Gwala | 32440 | 35417 | 21902 | 33943 | 156142 | 116645 | |
| iLembe | 34982 | 40024 | 28420 | 30448 | 133874 | 151346 | |
| Ugu | 47184 | 55824 | 47977 | 54553 | 205538 | 181416 | |
| uMgungundlovu | 47618 | 68337 | 62751 | 82060 | 260766 | 261459 | |
| uMkhanyakude | 39826 | 39348 | 34061 | 149079 | 262314 | 148330 | |
| uMzinyathi | 44767 | 51075 | 50612 | 44074 | 190528 | 115231 | |
| uThukela | 37993 | 34970 | 31528 | 32754 | 137245 | 164023 | |
| uThungulu | 55952 | 69018 | 59099 | 54100 | 238169 | 232733 | |
| Zululand | 17599 | 52341 | 44679 | 45213 | 159832 | 197444 | |



CONDOM DISTRIBUTION & MMC



73 Condoms for every Male 15-49yr

Nearly double from the previous FY: 119m to 205m

138 000 Male Medical Circumcisions: 4.8% of 15-49yr population

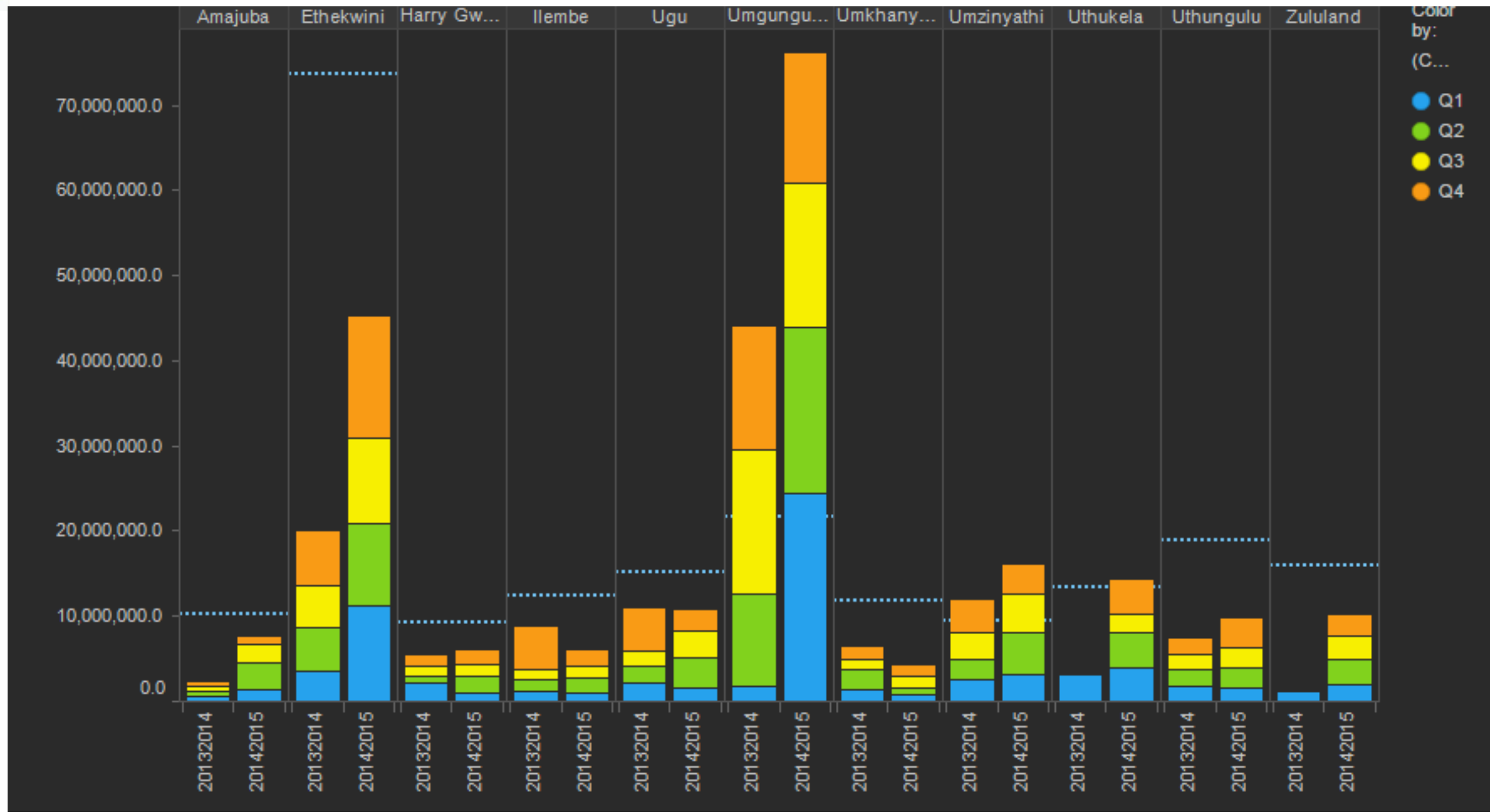


<2 Condoms for every Female 15-49yr

Nearly double from the previous FY: 2.5m to 4.8m

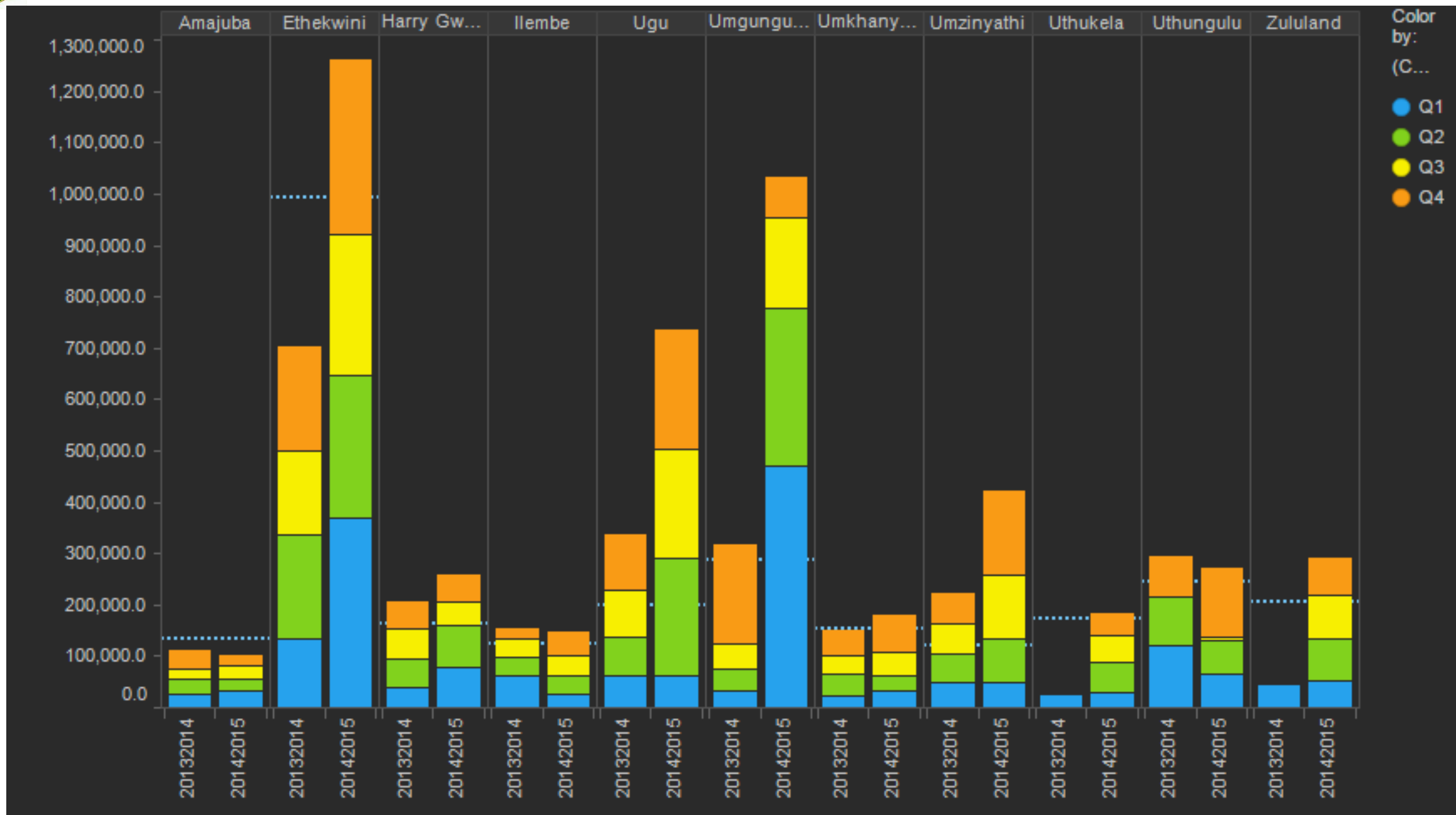


MALE CONDOMS DISTRIBUTED



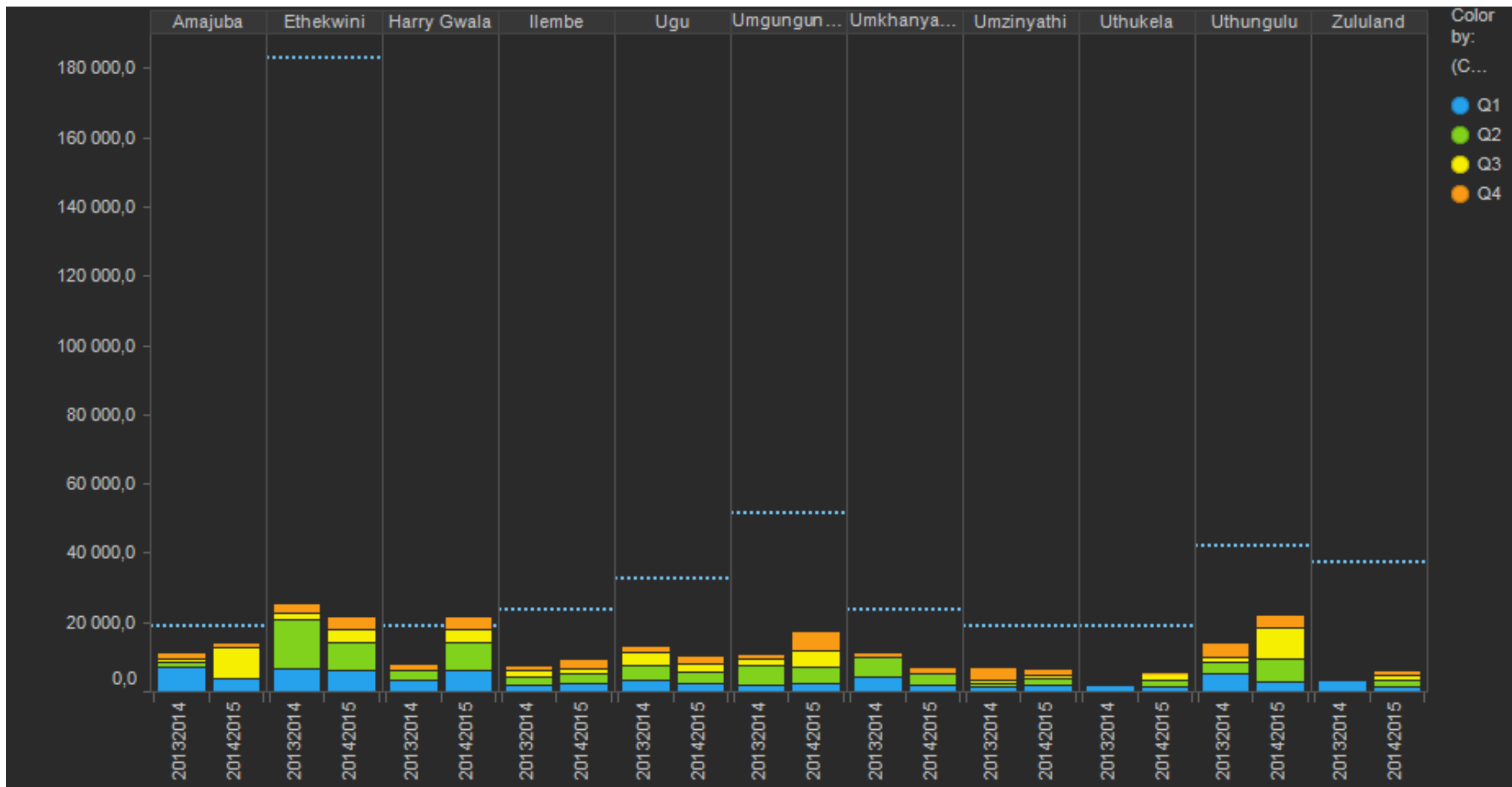


FEMALE CONDOMS DISTRIBUTED





MALE MEDICAL CIRCUMCISIONS





COMPREHENSIVE ART SERVICES

< 1m people on ART

> 880 000 adults are on ART.

9% > than in 2013/14 &

35% > than in 2012/13

< 55 000 children are on ART.

(1 child for every 17 adults on ART).

> 1 000 pts deregistered due to death in Q4 and decreasing

1 146

13 583

> 13 000 deregistered due to LTF in Q4 and worsening.

Children receiving
ART, 52 784

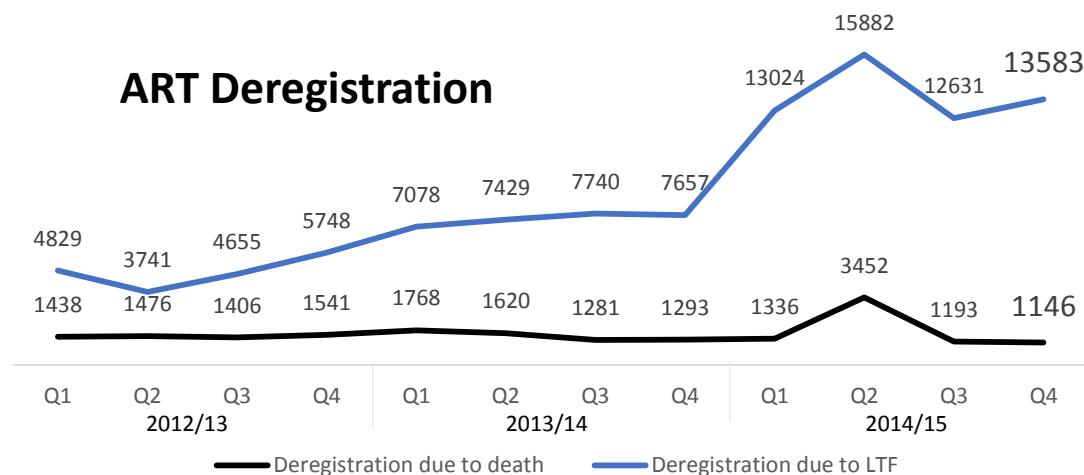
DEREGISTRATION IN Q4

Q4 2014/15

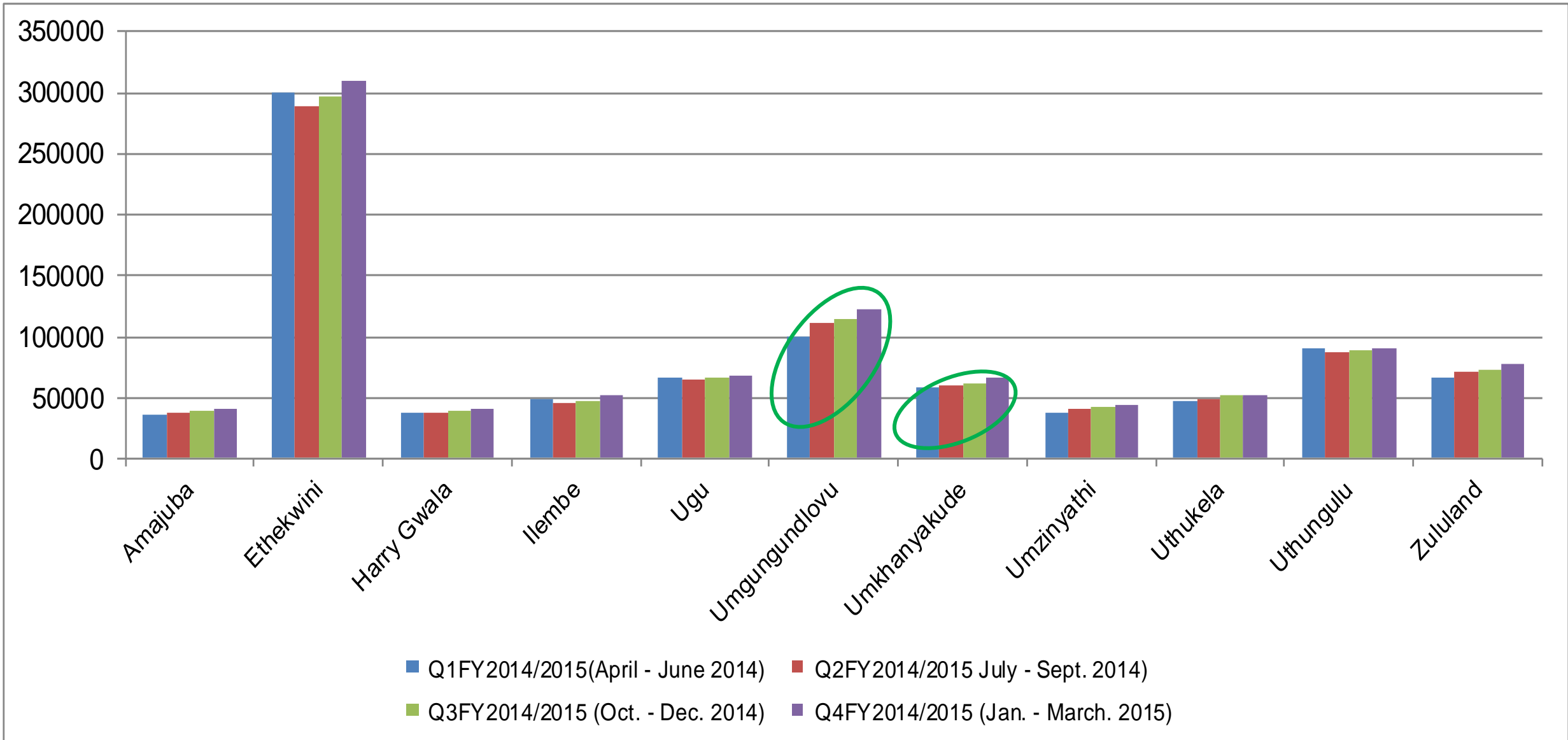
Adults
receiving
ART, 885 836

938 620 total on ART

ART Deregistration



Graph 16: Clients receiving ART 2014/2015 per quarter(district)

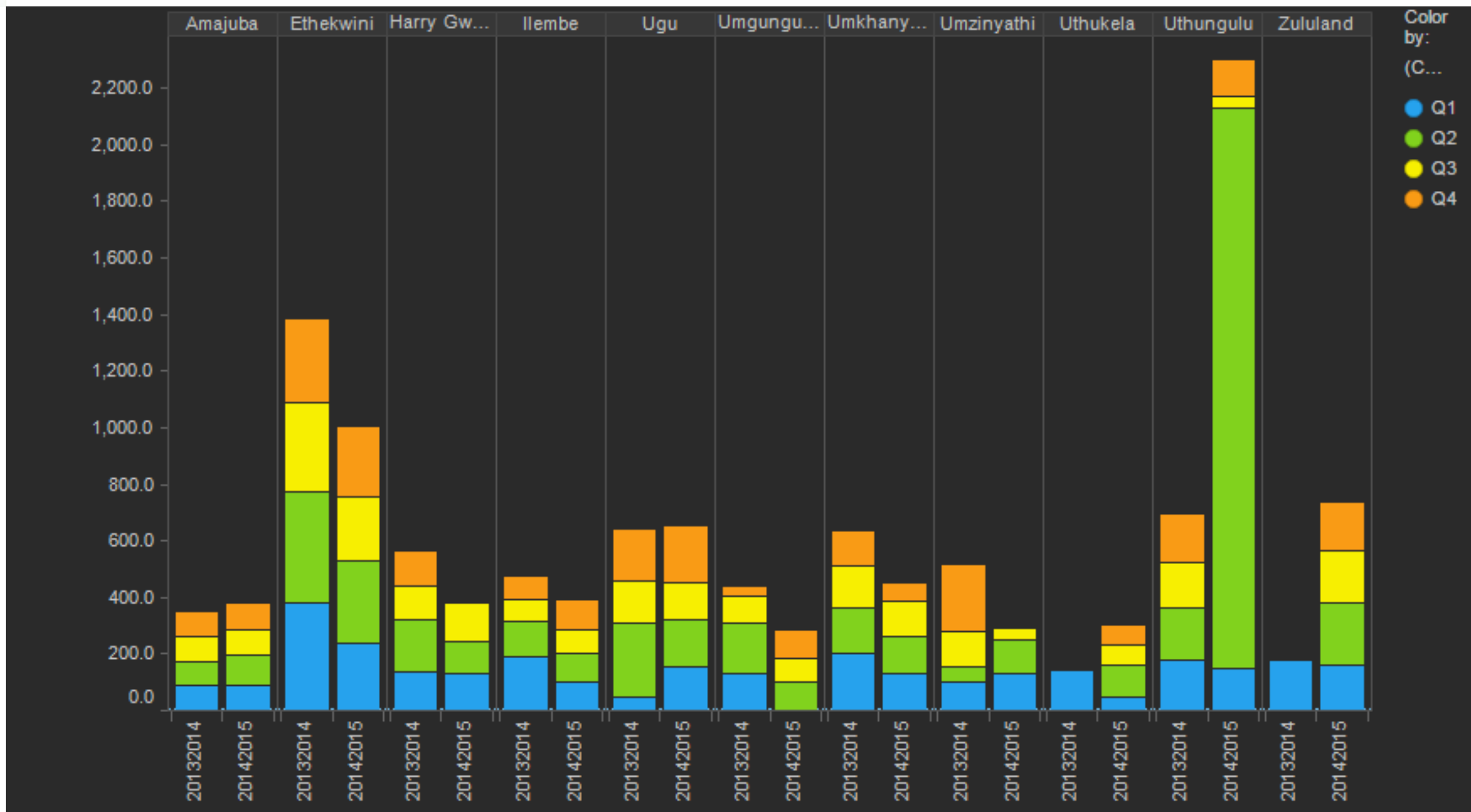


Remaining in Care (on ART) as at end of Q1(15/16)

| Name of Districts | Target 2015/16 | Q1 2015/2016 Actual |
|-------------------|----------------|---------------------|
| Amajuba DM | 57 290 | 42 488 |
| eThekwini MM | 380 650 | 318 341 |
| Harry Gwala DM | 57 830 | 42 621 |
| iLembe DM | 71 140 | 53 558 |
| Ugu DM | 95 560 | 69 950 |
| uMgungundlovu DM | 142 730 | 107 559 |
| Umkhanyakude DM | 94 770 | 65 621 |
| Umzinyathi DM | 96 630 | 44 241 |
| Uthukela DM | 76 880 | 58 100 |
| Uthungulu DM | 102 450 | 96 273 |
| Zululand DM | 100 270 | 78 990 |
| KwaZulu-Natal | 1 276 200 | 977 742 |

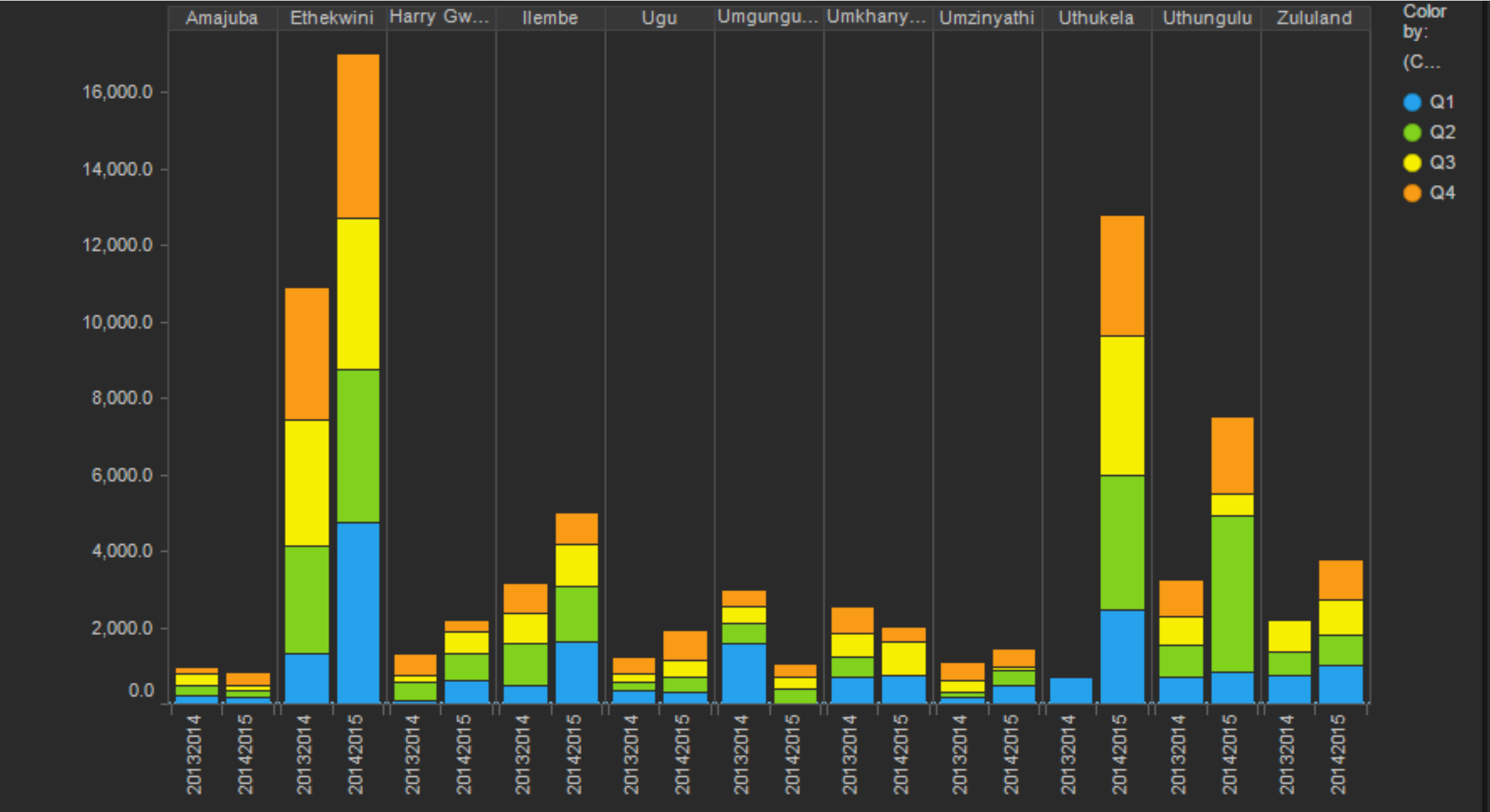


ART PATIENT DE-REGISTERED (DEATH)





ART PATIENT DE-REGISTERED (LOSS TO FOLLOW-UP)

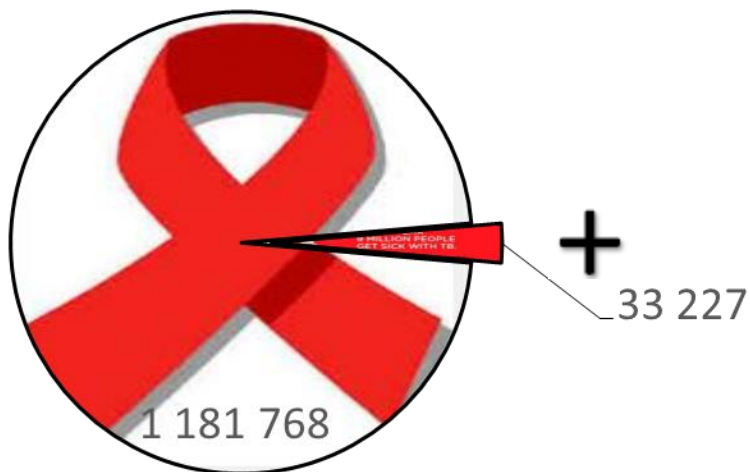




TB CASES OBTAINED

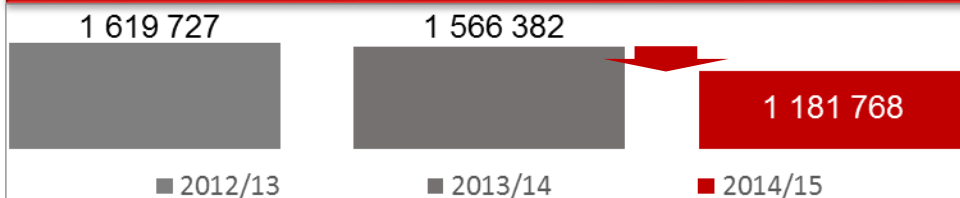
Sources: DHIS & Tier.net

TB HIV cases obtained = 3% of HCT clients screened for TB

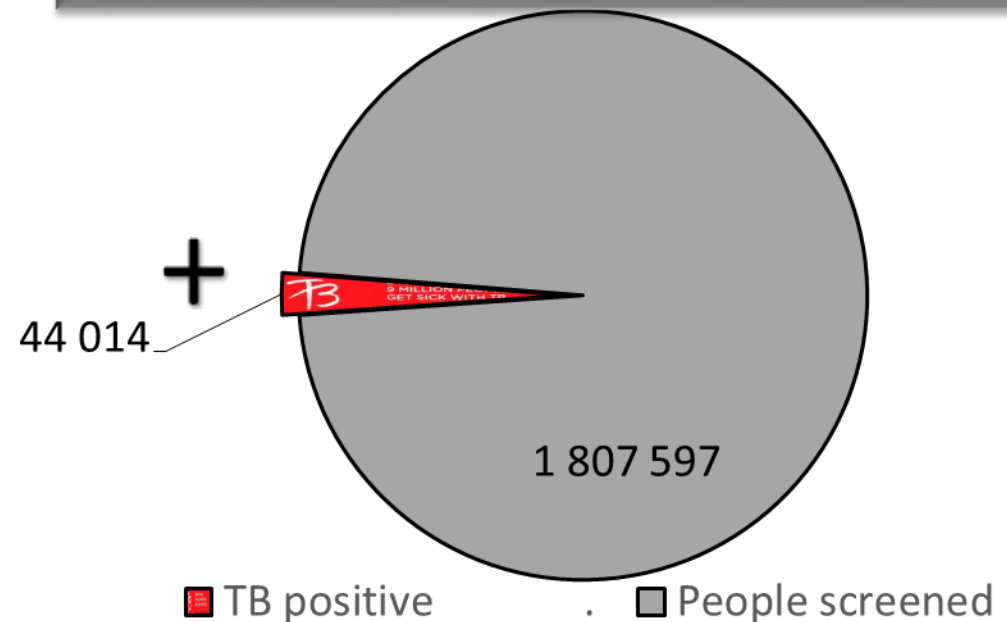


■ HCT clients screened for TB ■ TB HIV Cases obtained

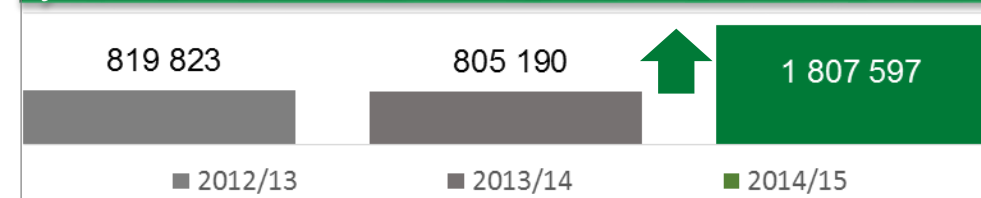
Screening of HCT clients for TB has dropped by almost 25%



A 1-in-50 ratio between the number of TB positive people and the number screened



The number of people screened in the last FY exceeds the sum of the previous two years



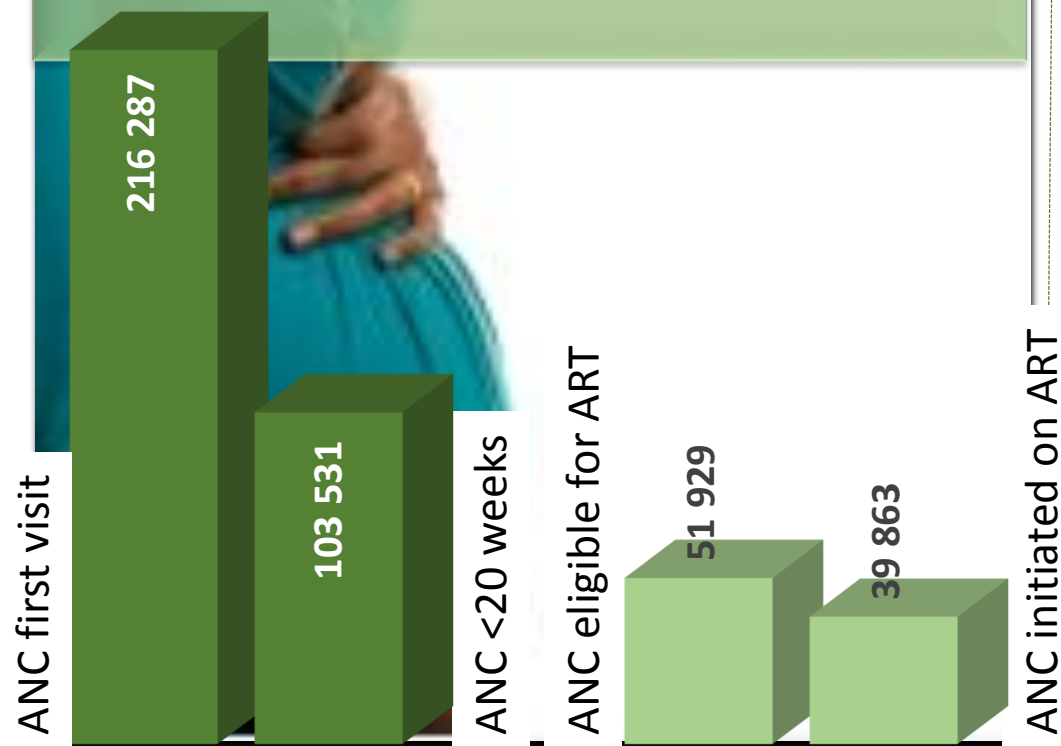


PMTCT

ANTENATAL CARE

24% of ANC clients were eligible for ART
77% of ANC clients eligible for ART were initiated on ART

Ethekwini initiated 46% of ART eligible ANC.
Other districts >87%



BABY 6 WEEKS

1.3% of babies tested at 6 weeks were HIV positive

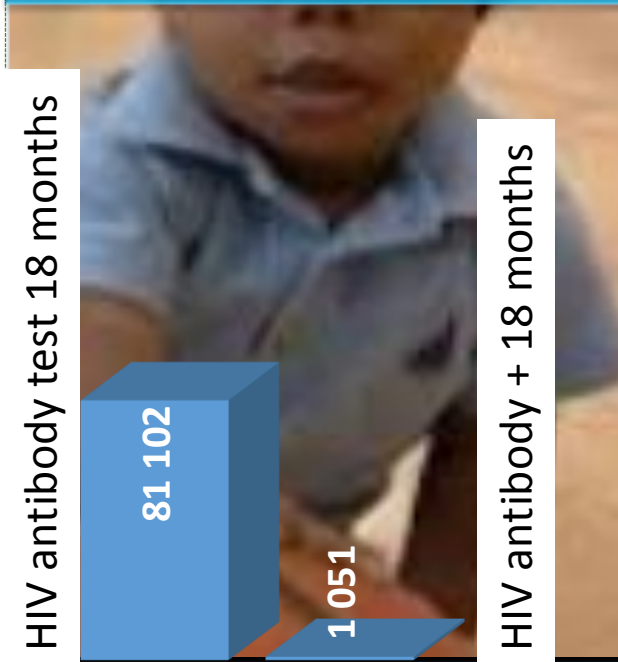
Harry Gwala, Ilembe, Ugu and Uthungulu had above average positive rates



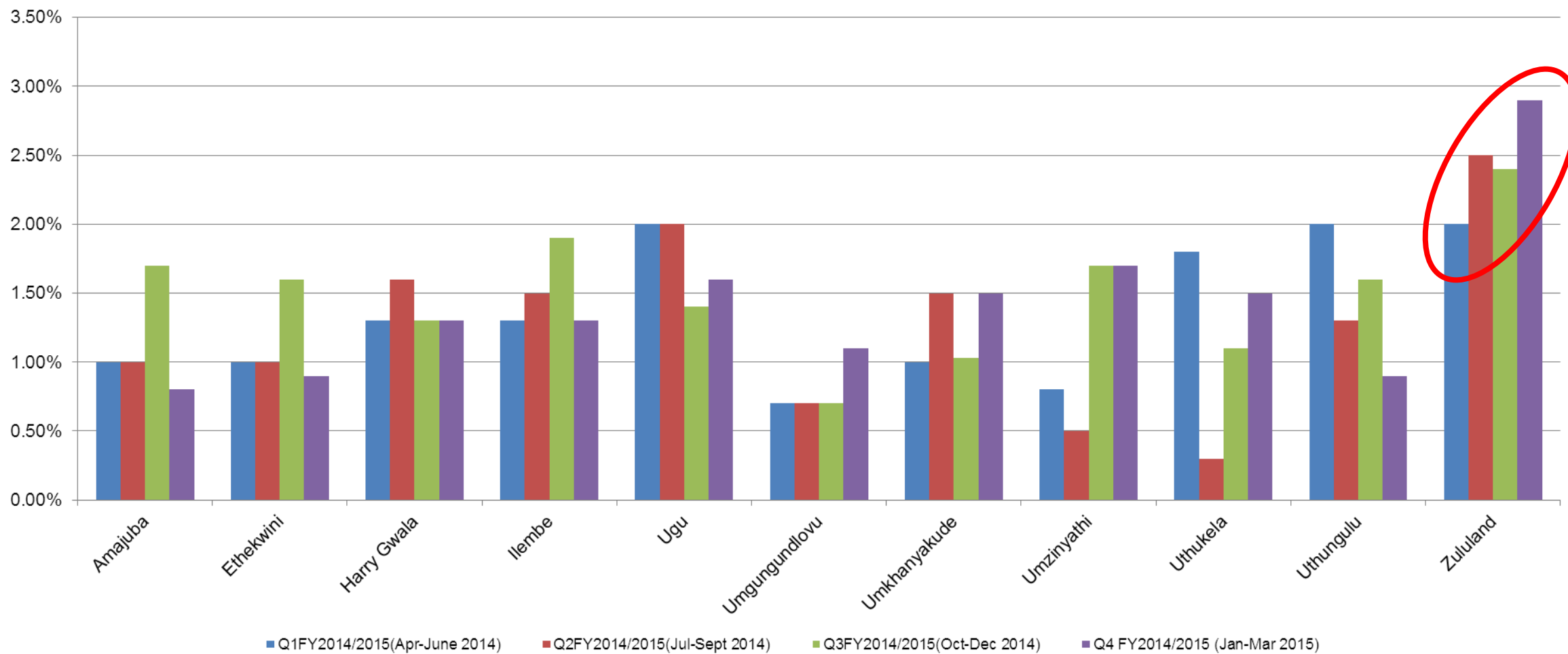
BABY 18 MONTHS

1.3% and HIV antibody positive at 18 months

Umkhanyakude 1.3% babies tested +ve at 6 wks but 7.6% tested antibody +ve at 18 mths.

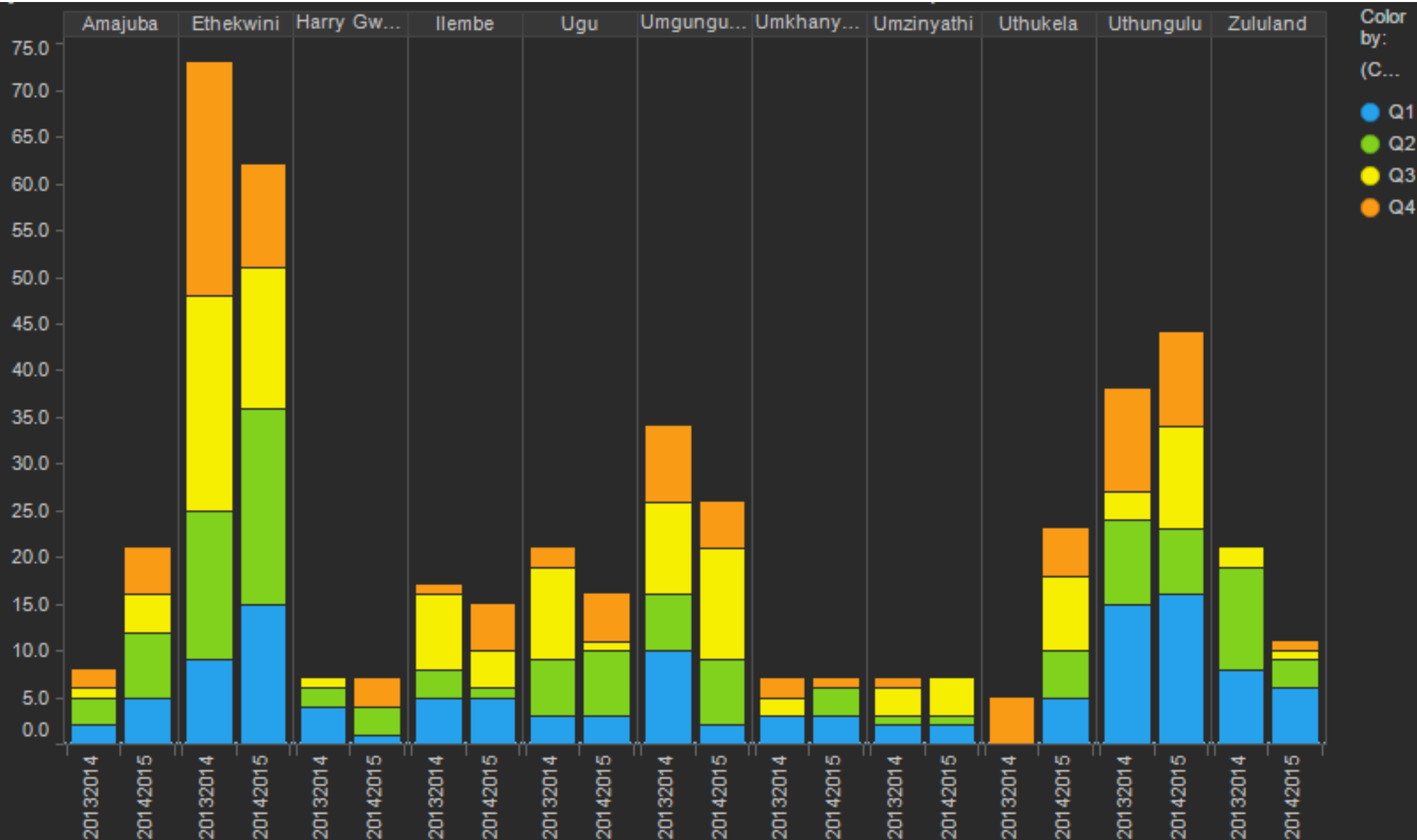


PCR positivity at around 6 weeks 2014/2015 per quarter (district)



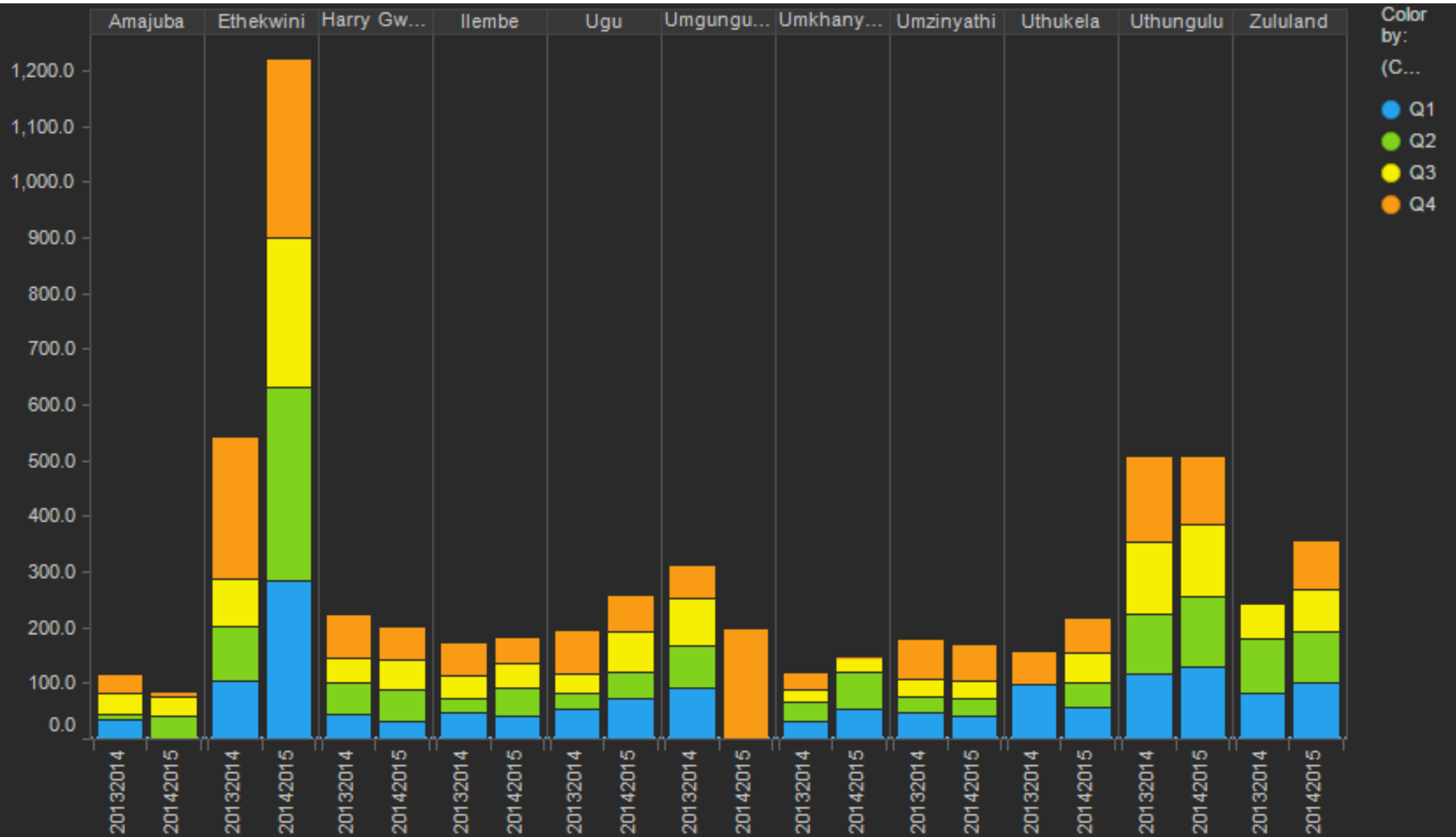


MATERNAL DEATHS AT PUBLIC HEALTH FACILITIES





INFANTS DEATHS AT PUBLIC HEALTH FACILITIES





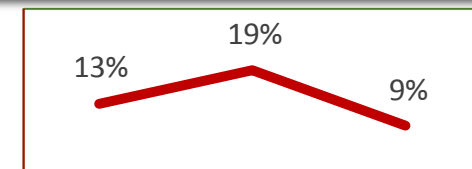
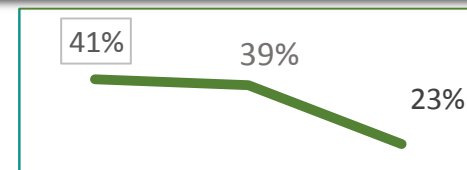
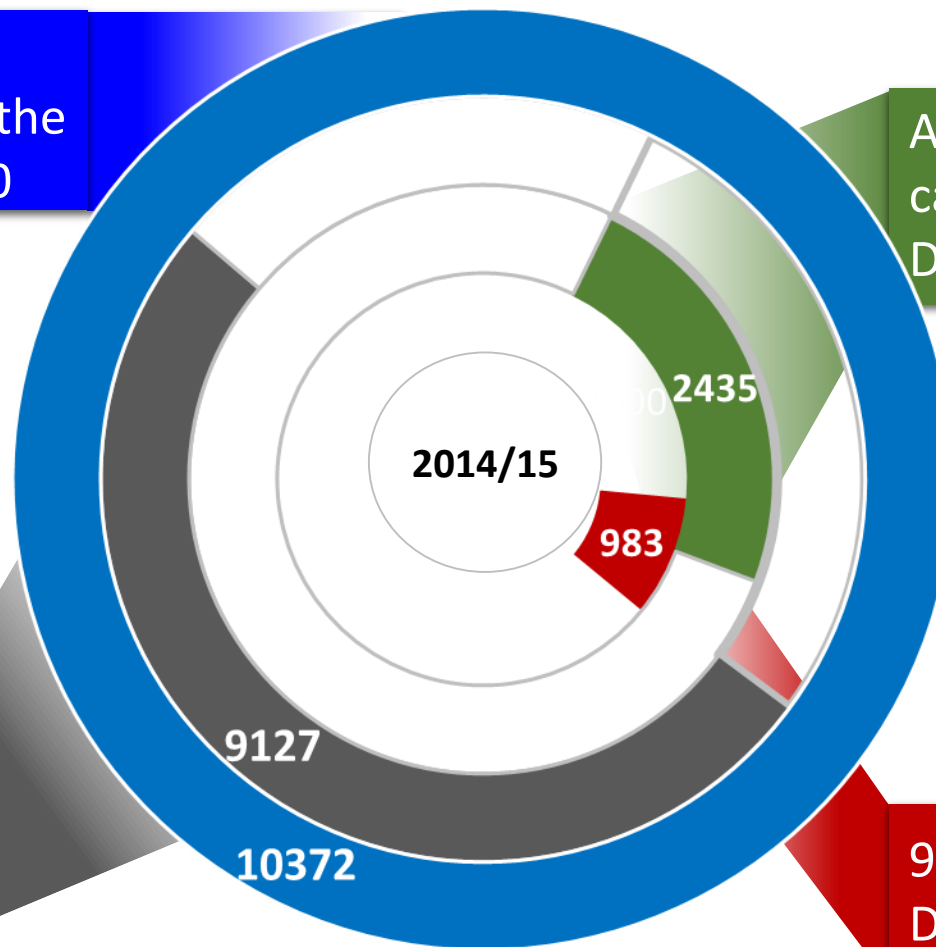
SEXUAL ASSAULT CASES

Number of new sexual assault cases remained the same at just over 10 000

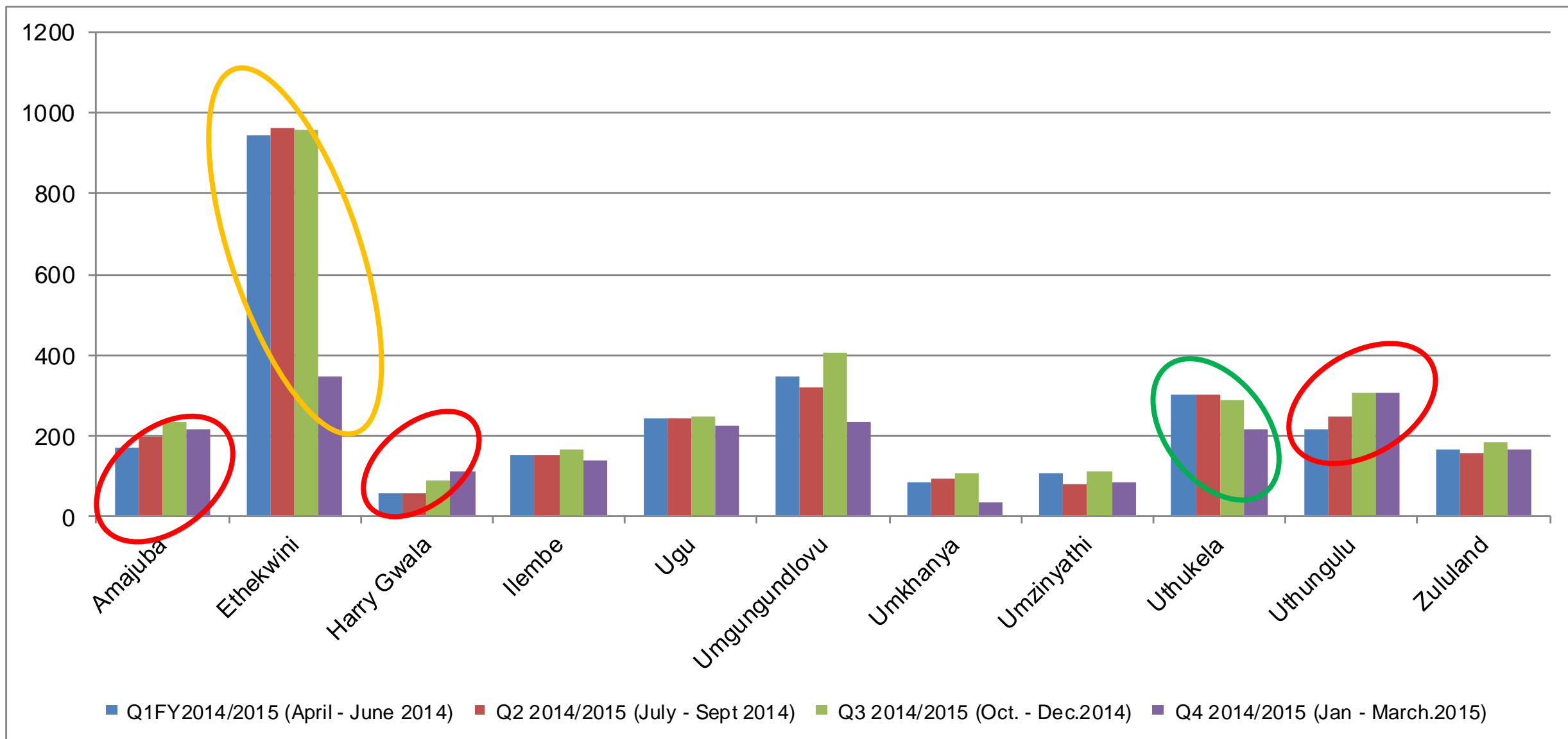
ARV prophylaxis was given to less than 1 in 4 cases
Decrease from 41% and 39% in previous years

The majority (88%) of cases were reported after 72 hours

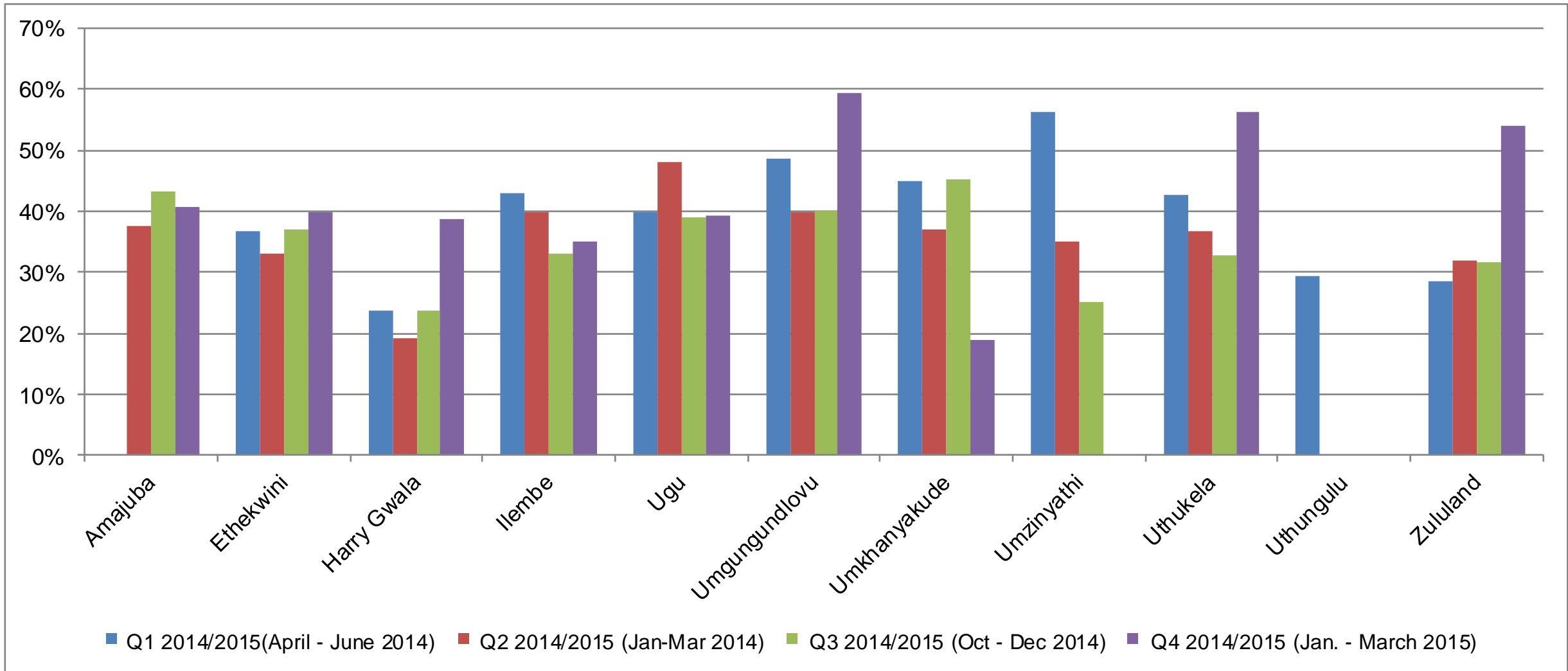
9% of reported cases tested HIV+ prior to PEP
Decrease from 19% in the previous year



Graph 14: New Sexual Assault Cases 2014/2015 by quarter (district)



Graph 15: Children under 12 Sexually Assaulted (%) per quarter (district)



Analysis: Sexual Assault Cases

- All districts, except for Harry Gwala and uThungulu showed a decrease in sexual assault cases between Q3 and Q4 2014/2015.
- uThungulu showed consistent decrease over the three quarters.

Analysis: Children under 12 Sexually Assaulted (%)

- Sexual Assault cases in children remains generally high across districts
- 7 districts: eThekweni, Harry Gwala, Ugu, uMgungundlovu, uMkhanyakude, uThukela and Zululand all showed an increase between Q3 and Q4.
- Amajuba and uThungulu only districts that recorded a decrease.



AIDS COUNCILS

Dashboard 19: LAC submitting reports 2014/2015 per quarter

| | # of LMs | Q1 FY2014/2015 (Apr-June 2014) | Q2 FY2014/2015 (Jul-Sept 2014) | Q3 FY2014/2015 (Oct-Dec 2014) | Q4 FY2014/2015 (Jan-March 2015) | TOTAL | Reporting Rate % |
|---------------|----------|-----------------------------------|---|-------------------------------------|--|-------|---------------------|
| Amajuba | 3 | 1 | 1 | 1 | 1 | 1 | 33% |
| eThekweni | | | | | | | |
| Harry Gwala | 5 | 5 | 5 | 4 | 3 | 4 | 80% |
| iLembe | 4 | 2 | 0 | 2 | 3 | 2 | 40% |
| Ugu | 6 | 1 | 2 | 0 | 4 | 1 | 17% |
| uMgungundlovu | 7 | 5 | 5 | 6 | 7 | 6 | 86% |
| uMkhanyakude | 5 | 5 | 5 | 5 | 5 | 5 | 100% |
| uMzinyathi | 4 | 3 | 3 | 3 | 3 | 3 | 75% |
| uThukela | 5 | 3 | 2 | 4 | 2 | 3 | 60% |
| uThungulu | 6 | 1 | 4 | 3 | 3 | 3 | 50% |
| Zululand | 5 | | | | | | |

Dashboard 20: WAC submitting reports 2014/2015 per quarter

| | # of Wards | Q1 FY2014/2015 (Apr-June 2014) | Q2 FY2014/2015 (Jul-Sept 2014) | Q3 FY2014/2015 (Oct-Dec 2014) | Q4 FY2014/2015 (Jan-March 2015) | TOTAL | Reporting Rate (%) |
|---------------|------------|--------------------------------------|--------------------------------------|-------------------------------------|---------------------------------------|-------|-----------------------|
| Amajuba | 46 | 21 | | 21 | 21 | 21 | 46% |
| eThekweni | 103 | | | | | | |
| Harry Gwala | 55 | 11 | 11 | 16 | 20 | 15 | 27% |
| iLembe | 74 | 65 | 0 | 6 | 0 | 22 | 30% |
| Ugu | 84 | 43 | 65 | 45 | 32 | 46 | 55% |
| uMgungundlovu | 84 | 43 | 47 | 62 | 51 | | 51% |
| uMkhanyakude | 68 | 0 | 0 | 0 | 0 | 0 | 0% |
| uMzinyathi | 53 | | 3 | 0 | 0 | 1 | 1.5% |
| uThukela | 73 | | | | | | |
| uThungulu | 99 | | 7 | 0 | | .2 | 2.0% |
| Zululand | 98 | | | | | | |

Key Points

Registration of Orphans & Vulnerable Children (OVC):

- 43% of the estimated number of orphans & vulnerable children in the province had been registered as compared to 41% in quarter 3 2014/2015.
- Harry Gwala, Amajuba and uMgungundlovu with highest registration percentages..
- Zululand and uMkhanyakude remained with the lowest registration percentages.

Care and Support of Orphans & Vulnerable Children:

- 43% of the estimated number of OVC were receiving care and support in Q4 2014/2015 as compared to 44% in Q32014/2015.
- Harry Gwala, uThungulu and Amajuba with highest percentages of OVC receiving care & support
- Zululand and eThekwini remain the districts with the lowest percentages of OVC receiving care & support

Care and Support of Orphans & Vulnerable Children:

- An assumption that the criteria for receiving care and support was registration, 99% of the registered OVC were receiving care and support.

Key Points

Learner Pregnancies:

- 7 districts: eThekwini, Harry Gwala, iLembe, Ugu, uMkhanyakude, uThukela and uThungulu with increases in learner pregnancy numbers between Q3 & Q4 2014/2015
- Amajuba and Zululand showing consistent decrease.

Deliveries Under 18 Years:

- Generally there is a decreasing trend in deliveries under 18 years.
- uMkhanyakude has shown consistent decrease in deliveries under 18 years over Q2, Q3 and Q4 2014/2015

Infants Positivity at around 6 weeks:

- The PCR rate for most districts ranged between 0.8% (uMgungundlovu) to 1.8% (Ugu)
- uMgungundlovu is the only district to have met the target of less than 1%

HIV Testing:

- Most districts (9) showed an increase in numbers tested between Q3 and Q4.
- eThekwini showed consistent increase in the numbers tested over the 4 quarters.
- 6 districts: Amajuba, Harry Gwala, Ugu, uMkhanyakude, uMzinyathi and uThungulu achieved set targets for 2014/2015

Key Points

Medical Male Circumcision:

- 8 districts: eThekweni, iLembe, Ugu, uMgungundlovu, uMkhanyakude, uMzinyathi, uMzinyathi, uThungulu and Zululand increased their MMC numbers between Q3 and Q4 2014/2015.
- Zululand was only district able to achieve the target.

Male Condoms Distribution:

- uMgungundlovu remains the district distributing most number of male condoms.
- 4 districts: uMgungundlovu, uMzinyathi, iLembe and uThukela achieved distribution targets.

Male condoms distributed per male per quarter:

- uMgungundlovu distributed the highest number of male condoms per male in 2014/2015.
- 4 districts: iLembe, uMgungundlovu, uMzinyathi, uThukela achieved the set targets. iLembe, uMkhanyakude and uThungulu remained districts with the lowest number of condoms per male ranging 20 -34

Female Condoms Distribution

- All districts achieved target set.

Key Points

Sexual Assault Cases

- Sexual assault cases generally decreased
- uThungulu showed consistent decrease over the three quarters

Children under 12 Sexually Assaulted (%)

- The rate of children under 12 sexually assaulted remains high

Clients on ART

- All districts showing increases in numbers of clients on ART

ART clients lost to follow up

- 5 districts: Amajuba, eThekwini, Ugu, uMgungundlovu and uMzinyathi showed increases in lost to follow up between Q3 and Q4 2014/2015

Local AIDS Councils submitting reports

- Just about 40 % of LACs reported to DAC

Ward AIDS Committees

- Generally Ward AIDS Committees not reporting to LACs